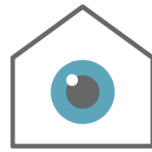


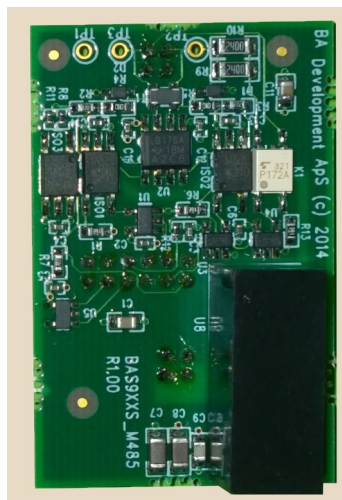
BAS9_M485



BA SYSTEMS
BUILDING AUTOMATION SYSTEMS

Datasheet

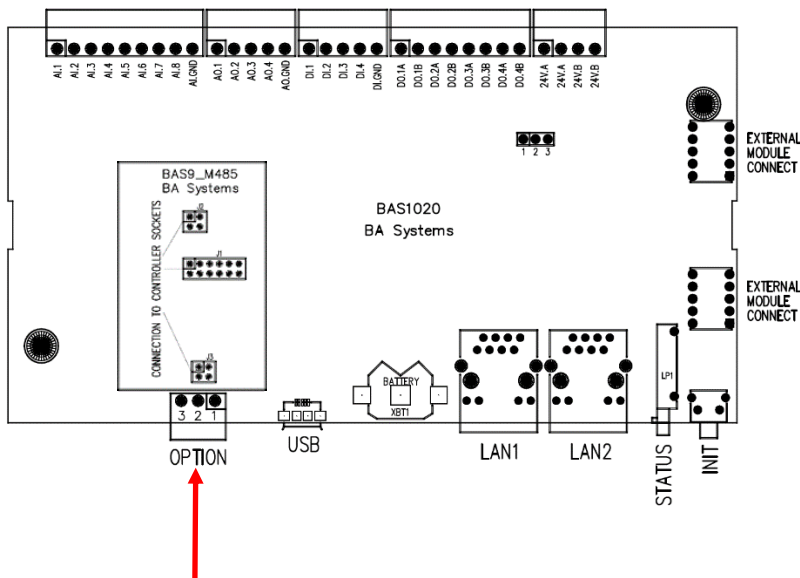
BAS9_M485 is an interface module for use in BAS918/929/1020 controllers to be inserted in the internal module position as shown below.



Specification:

- RS485 communication module
- Programmable 120 ohm bus termination
- Supplied from controller
- 1KV galvanic isolation to interface
- Connected through OPTION port
- Used for MODBUS, BAS Native and GENI communication
- Dimention 30,2 mm x 46,7 mm

BAS1020 BAS9_M485 module mount



Option port connection:

Terminal pin	MBUS
1	A (PLUS)
2	GND
3	B (MINUS)